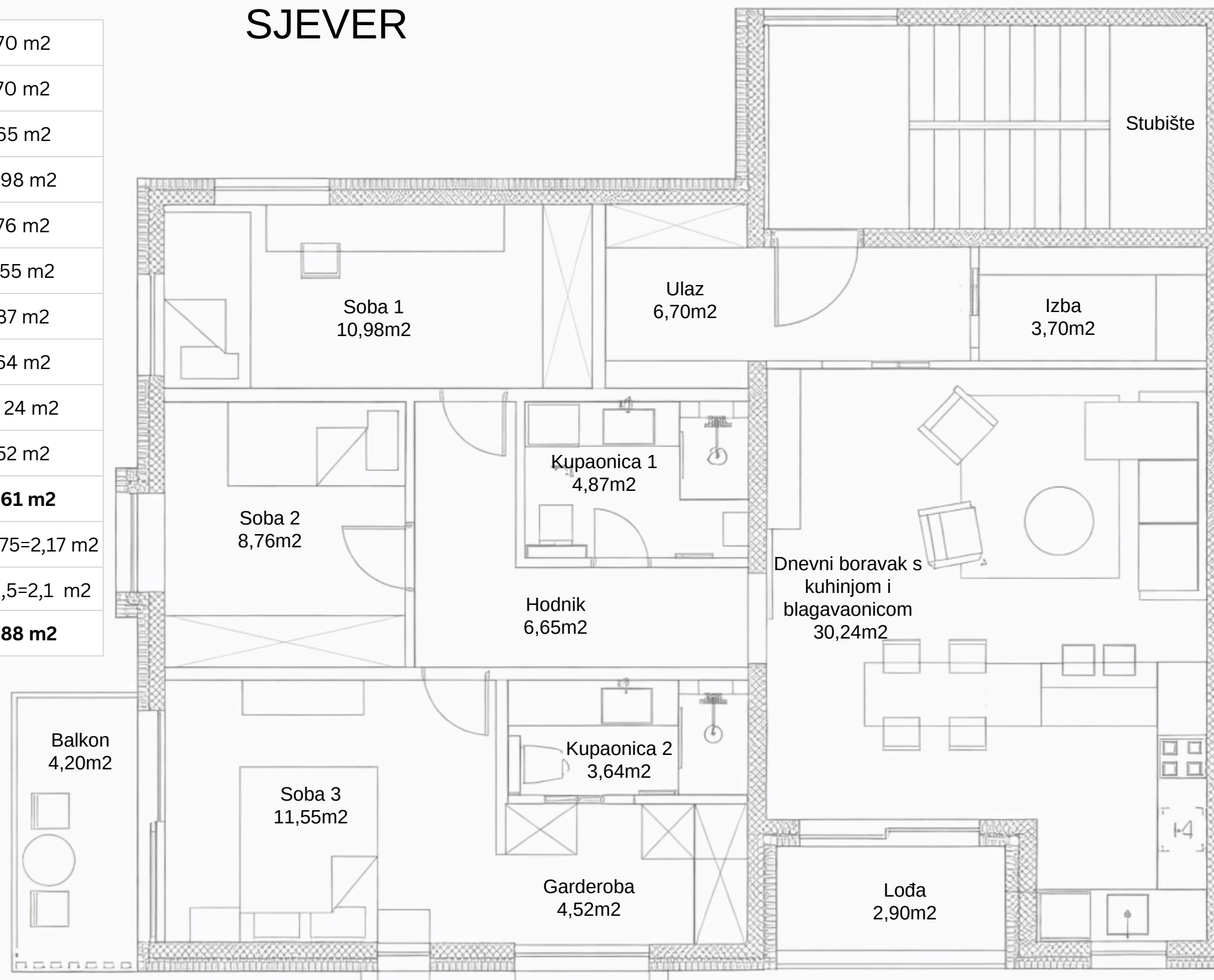


# STAN 1. KAT K1S2

Ulaz	6,70 m <sup>2</sup>
Izba	3,70 m <sup>2</sup>
Hodnik	6,65 m <sup>2</sup>
Soba 1	10,98 m <sup>2</sup>
Soba 2	8,76 m <sup>2</sup>
Soba 3	11,55 m <sup>2</sup>
Kupaonica 1	4,87 m <sup>2</sup>
Kupaonica 2	3,64 m <sup>2</sup>
DB. s kuh. i bl.	30,24 m <sup>2</sup>
Garderoba	4,52 m <sup>2</sup>
<b>ZATVORENO</b>	<b>91,61 m<sup>2</sup></b>
Loda	2,90x0,75=2,17 m <sup>2</sup>
Balkon	4,20x0,5=2,1 m <sup>2</sup>
<b>UKUPNO</b>	<b>95,88 m<sup>2</sup></b>

SJEVER



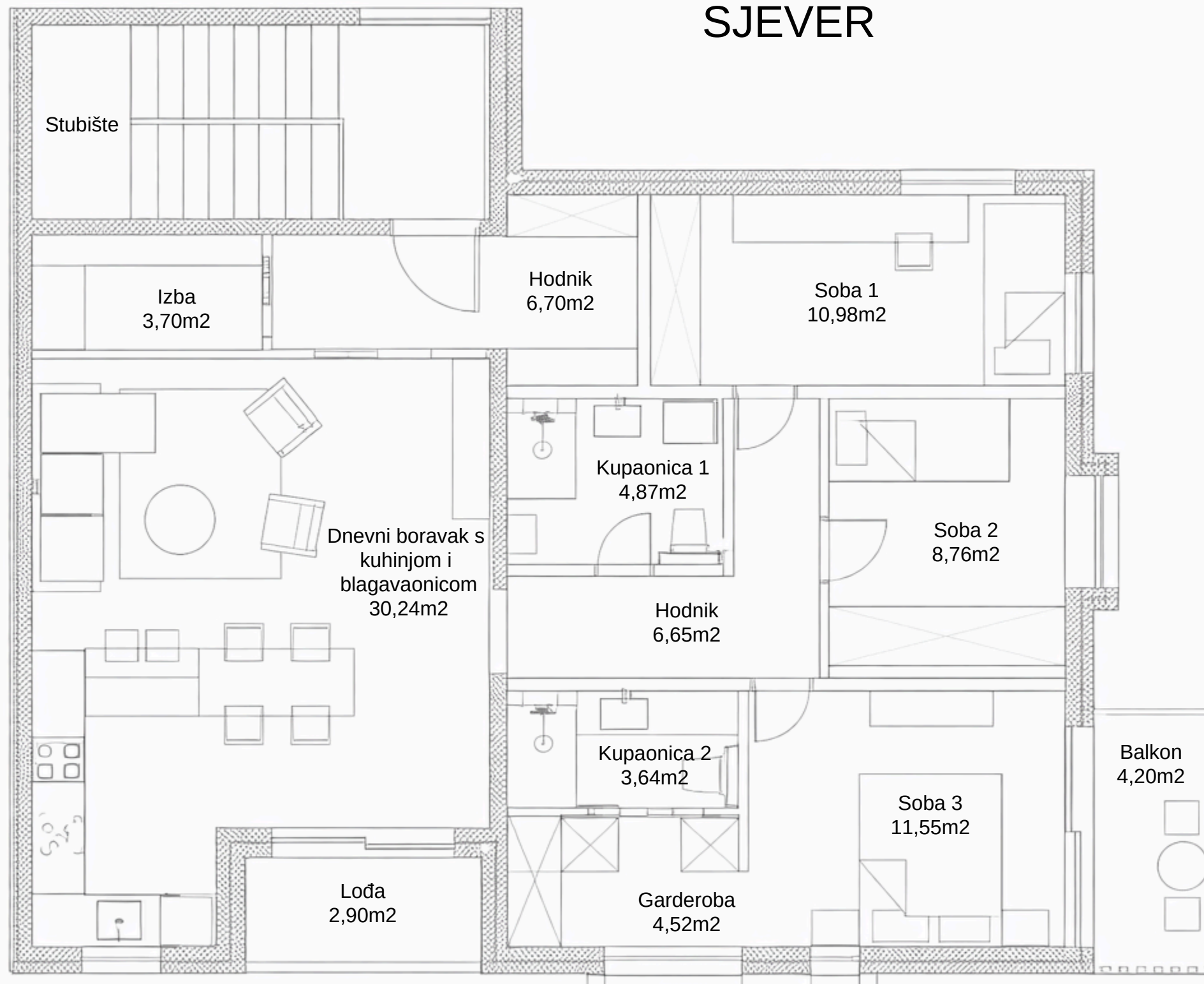
Parkirno mjesto: **PM2**



# STAN 1. KAT K2S2

SJEVER

Ulaz	6,70 m <sup>2</sup>
Izba	3,70 m <sup>2</sup>
Hodnik	6,65 m <sup>2</sup>
Soba 1	10,98 m <sup>2</sup>
Soba 2	8,76 m <sup>2</sup>
Soba 3	11,55 m <sup>2</sup>
Kupaonica 1	4,87 m <sup>2</sup>
Kupaonica 2	3,64 m <sup>2</sup>
DB. s kuh. i blag.	30,24 m <sup>2</sup>
Garderoba	4,52 m <sup>2</sup>
<b>ZATVORENO</b>	<b>91,61 m<sup>2</sup></b>
Lođa	2,90x0,75=2,17 m <sup>2</sup>
Balkon	4,20x0,5=2,1 m <sup>2</sup>
<b>UKUPNO</b>	<b>95,88 m<sup>2</sup></b>



Parkirno mjesto: **PM5**



# PENTHOUSE K1S3

SJEVER

Ulaz	3,20 m <sup>2</sup>
Predsooblje	1,95 m <sup>2</sup>
D.B. s Blag.	26,37 m <sup>2</sup>
Soba 1	11,25 m <sup>2</sup>
Soba 2	10,77 m <sup>2</sup>
Kupaonica 1	4,25 m <sup>2</sup>
Kupaonica 2	4,00 m <sup>2</sup>
Kuhinja	5,89 m <sup>2</sup>
<b>ZATVORENO</b>	<b>67,68 m<sup>2</sup></b>
Terasa	18,55x0,25 = 4,637 m <sup>2</sup>
Žardinjera	8,66 m <sup>2</sup>
<b>UKUPNO</b>	<b>72,317 m<sup>2</sup> + 8,66m<sup>2</sup> (Žardinjera)</b>

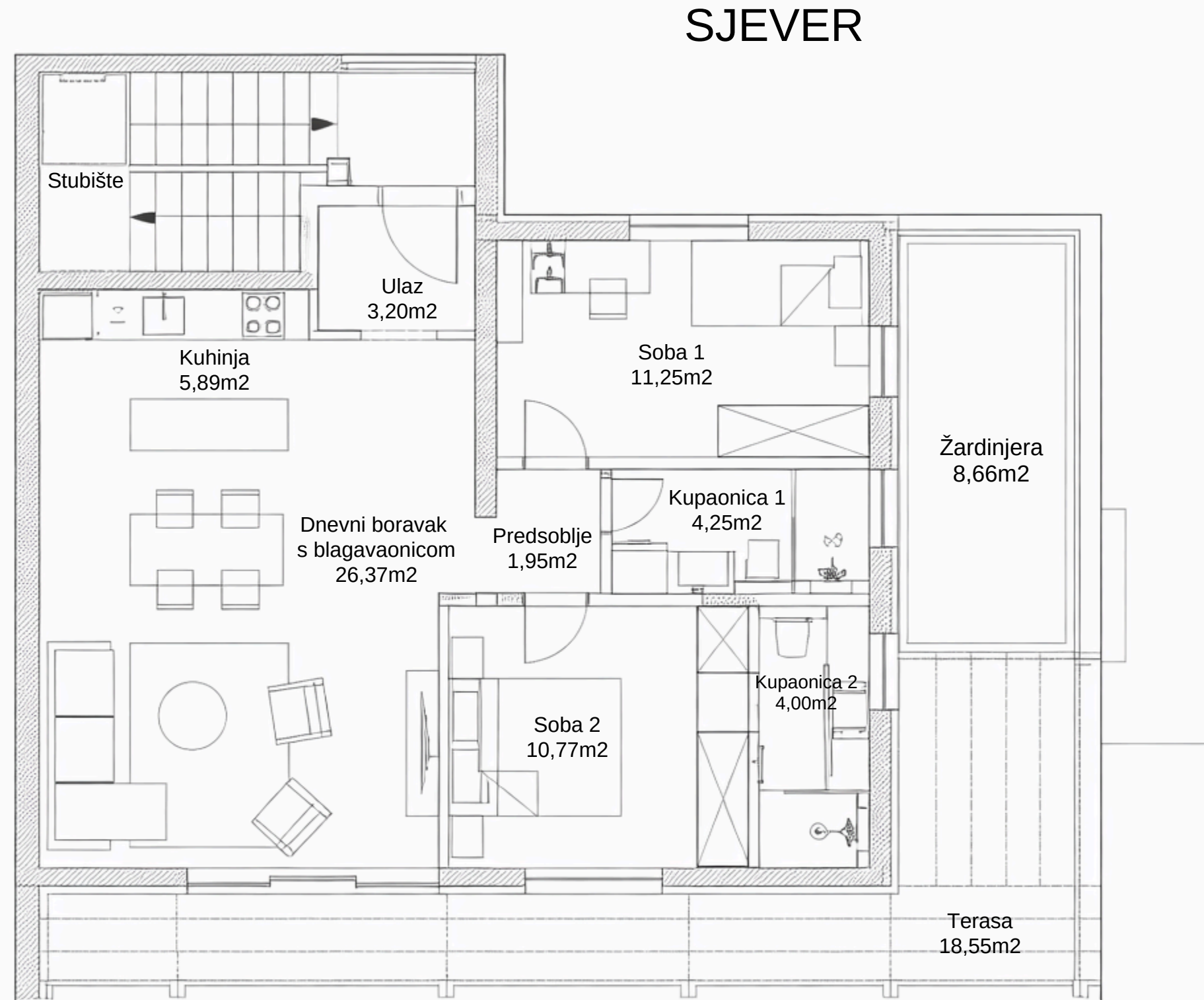


Parkirno mjesto: **PM3**



# PENTHOUSE K2S3

Ulaz	3,20 m <sup>2</sup>
Predsooblje	1,95 m <sup>2</sup>
D.B. s Blag.	26,37 m <sup>2</sup>
Soba 1	11,25 m <sup>2</sup>
Soba 2	10,77 m <sup>2</sup>
Kupaonica 1	4,25 m <sup>2</sup>
Kupaonica 2	4,00 m <sup>2</sup>
Kuhinja	5,89 m <sup>2</sup>
<b>ZATVORENO</b>	<b>67,68 m<sup>2</sup></b>
Terasa	18,55x0,25 = 4,637 m <sup>2</sup>
Žardinjera	8,66 m <sup>2</sup>
<b>UKUPNO</b>	<b>72,317 m<sup>2</sup> + 8,66m<sup>2</sup> (Žardinjera)</b>



Parkirno mjesto: **PM6**



